

Greenbelt Alternative

Site Characteristics

- Approximately 62 acres
- Adjacent to the Greenbelt Metro Station, serving Green line, Yellow line (rush plus) and MARC commuter rail
- Inside the Capital Beltway
- Site owned by WMATA, part of Greenbelt Metro Station property

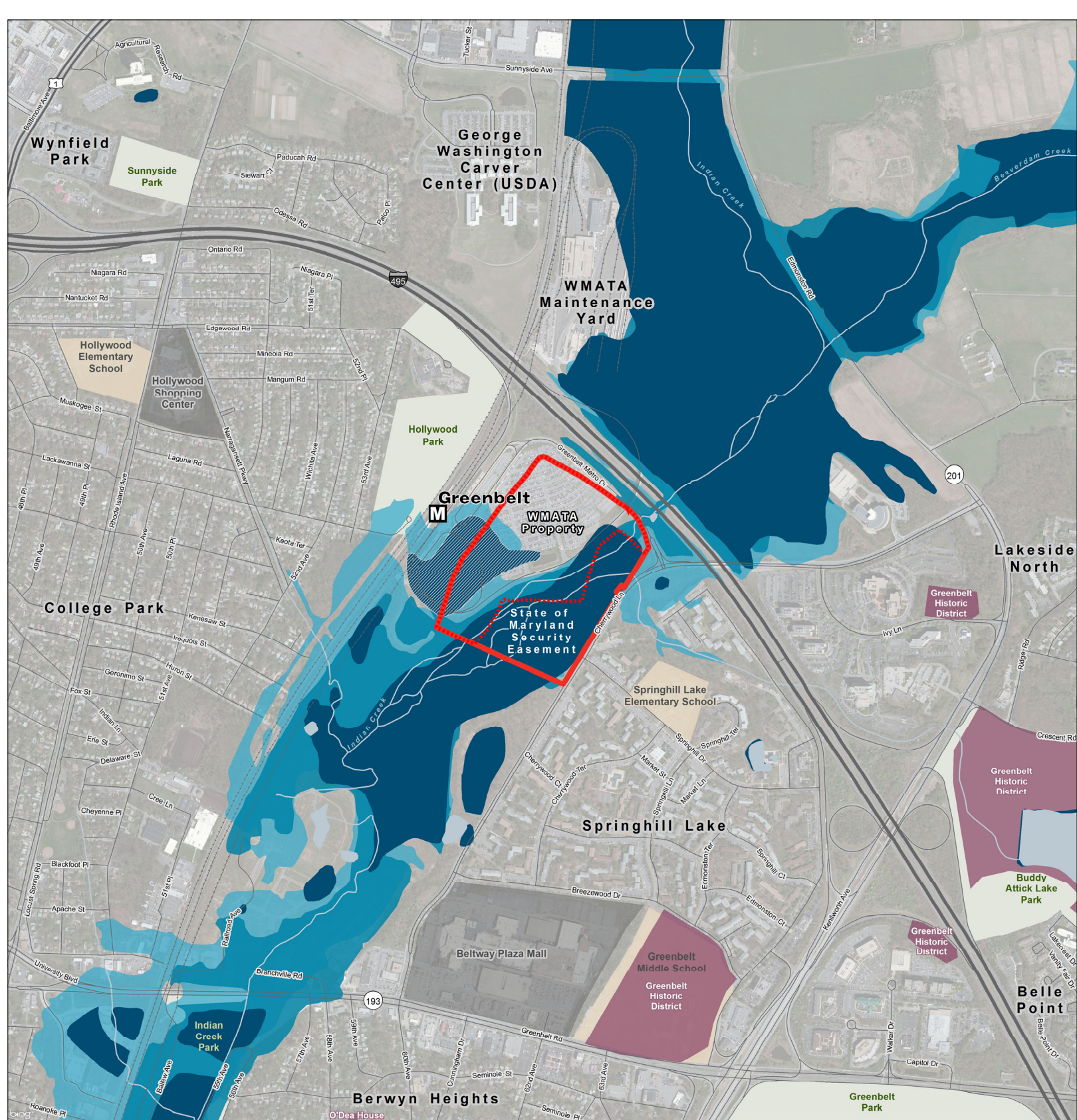
What resources will be potentially analyzed in the Environmental Impact Statement?

Note: not all resources pertain to all of the sites.

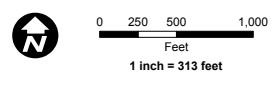
- | | |
|--|---|
| 1 Land Use | 6 Transportation , Traffic, and Parking |
| 2 Aesthetics and Visual Resources | 7 Cultural Resources |
| 3 Earth Resources <ul style="list-style-type: none">• Geology• Topography• Soils | 8 Hazardous Materials / Public Health and Safety |
| 4 Biological Resources <ul style="list-style-type: none">• Vegetation• Wildlife• Rare, Threatened, and Endangered Species | 9 Community Facilities |
| 5 Water Resources <ul style="list-style-type: none">• Surface Water• Groundwater• Wetlands• Floodplains | 10 Noise |
| | 11 Air Quality |
| | 12 Infrastructure and Utilities |
| | 13 Socioeconomics |
| | 14 Cumulative Impacts |

Issues of Interest at the Greenbelt Site

- Compatibility with existing zoning and land use
- Potential traffic impacts on Study Area roadways including Cherrywood Lane, Metro access roads, and Capital Beltway entrance and exit ramps
- Impact on existing parking availability
- Impacts to floodplains and wetlands
- Impacts to Metro service



- Site Boundary
- Parcel Boundary
- Metro Station
- Historic District (National Historic Landmark)
- Previously Developed Wetland
- Wetland
- Preliminary Revised Floodplain
- Existing FEMA 100-year floodplain
- School
- Park
- Major Shopping Center



FEMA is in the process of revising the 100 year floodplain in Prince George's County. These changes are expected to take effect in July 2015.

Sources:
ESRI (2013), GSA (2013),
Prince George's County (2013),
FEMA (2014), USGS (2014), MHT (2014),
Maryland Dept of Planning (2014)

GSA and FBI welcome your comments on what resources and issues are important to you.